



# INTRODUCTION TO PCE AUTOMATION

SUFFOLK CHAMBER FORUM



OLLIE COOK

FEB 2025

# OVERVIEW

**01** PCE HISTORY

---

**02** ABOUT PCE

---

**03** FUTURE PLANS

---

# OVERVIEW

**01** PCE HISTORY

---

**02** ABOUT PCE

---

**03** FUTURE PLANS

---

# THE HISTORY OF PCE



# PCE'S HISTORY



# OVERVIEW

**01** PCE HISTORY

---

**02** ABOUT PCE

---

**03** FUTURE PLANS

---



# ABOUT PCE AUTOMATION

**For more than 60 years, we've been at the forefront of UK automation and manufacturing, harnessing cutting-edge technology to create bespoke solutions to global manufacturing challenges.**

Our team are leaders in their field, with a reputation for innovative thinking and top quality. Together, PCE's expert engineers, technicians and programmers harness cutting-edge technology to create exceptional 'turnkey' systems which assemble, test, pack and deliver innovative, future-facing products to world-class standards.



# PCE IN NUMBERS



**Headcount:** 221



**Years in Industry:** 64



**Machines Worldwide:** 5414



**2024 Order Intake:** £39m



**Production Space:** 10,864 m2

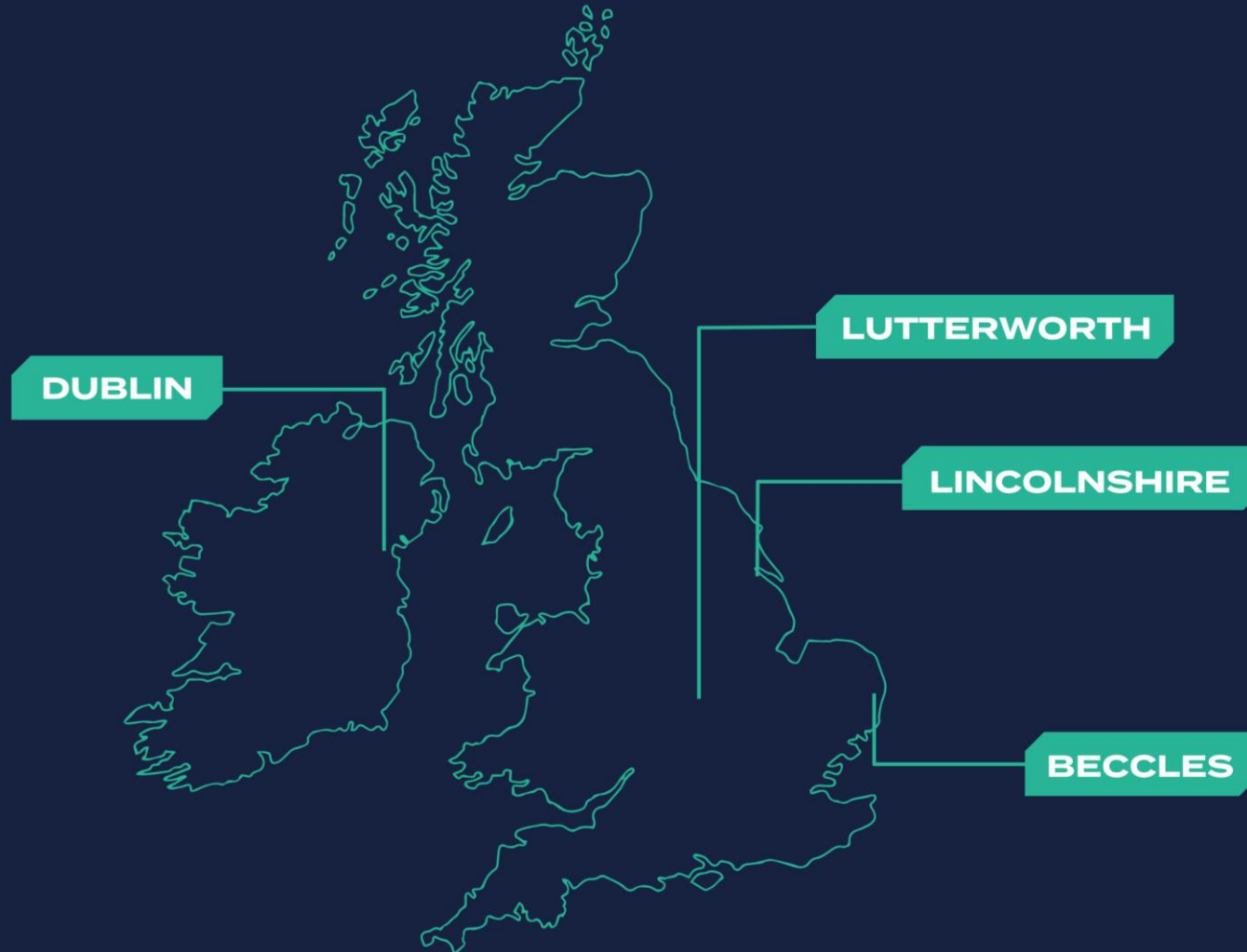


**Sites:** 4





# SITE LOCATIONS



# OUR VALUES

## INNOVATION IS EVERYTHING

We're not content just to do things the way they've always been done. We work with industry leaders to engineer solutions that bring the future closer.

## THE FUTURE IS NOW

Why wait? Our team harnesses the latest technologies to solve problems we're only just starting to understand, to bring tomorrow into today.

## OUR PEOPLE MAKE IT HAPPEN

PCE is burgeoning with great minds, ready to make the impossible possible. Collaborative working allows us to innovate and devise unique solutions to our customer's requests.

# OUR PEOPLE



**Headcount:** 221 – With plans to raise this to 250 by the end of the year.

We are always eager to welcome new talent into our industry and regularly support students and apprentices, bringing fresh energy into manufacturing.

As a proud Platinum Member of The 5% Club, we have demonstrated our commitment to workforce development by maintaining at least 5% of our team in Earn & Learn schemes for three consecutive years, with a minimum of 10% in the third year.

Building on this dedication, we have recently invested in a new training room designed specifically for the development of our apprentices. Beyond that, we continuously seek opportunities for our team members to advance their careers, whether through training courses, degrees, or other professional development initiatives.



# HONOURS

## QUEEN'S AWARD FOR INTERNATIONAL TRADE 2020

In 2020, PCE won the Queen's Award for International Trade.

## KING'S AWARD FOR ENTERPRISE 2023

PCE received the King's Award for Enterprise 2023 for our contributions to innovation within the Ocular sector.



# OUR LIFESCIENCE PORTFOLIO



GLASS SYRINGES



PLASTIC SYRINGES



VIALS



CATHETER



GUIDEWIRE



STENTS



PACEMAKERS



OSTOMY CARE



CELL CULTURE DISHES



PCR PLATES



MEDICAL FILTERS



DRY POWDER INHALER



AEROSOL INHALER

es Worldwide:  
**5416**

Machines Worldwide:  
**5416**

# COMMITMENT TO COMMUNITY

## LOCAL COMMUNITIES AND CHARITIES

At PCE, we are committed to giving back to our local community. In 2024, we have increased our contributions to local charities and initiatives by 93%, reinforcing our dedication to making a difference. This May, we are proud to take on the Three Peaks Challenge in loving memory of Sarah Cook, honouring her legacy by creating a lasting positive impact on the community.

## EMPLOYEE INVESTMENT

In 2024, PCE Automation was proudly awarded Platinum Membership in The 5% Club! This prestigious award recognises employers who have maintained at least 5% of their workforce in Earn & Learn schemes for three consecutive years, with a minimum of 10% in the third year. This honour highlights our dedication to fostering a more inclusive, diverse, and accessible workplace through training and development.

## ATTENDING LOCAL EVENTS

We're passionate about engaging with our local community and being part of events that bring people together. The Beccles Soapbox Derby was an incredible experience, and taking home first place made it even more special! We're always looking for new ways to get involved, support local initiatives, and make a positive impact.

# SITE ENVIRONMENTAL INITIATIVES

## 6 CLEAN WATER AND SANITATION



All new facility expansions will store rainwater to utilise over our site.

## 7 AFFORDABLE AND CLEAN ENERGY



The major source of our HQ energy is solar. We continue to strive to phase out all non-renewables by 2030.

## 13 CLIMATE ACTION



We are committed to the Paris Climate Agreement by 2030.

## 15 LIFE ON LAND



We look to implement the below initiatives on all sites:

- Wildlife boxes
- Native trees around site perimeter
- Suds basins
- Species-rich meadow areas.



# OVERVIEW

**01** PCE HISTORY

---

**02** ABOUT PCE

---

**03** FUTURE PLANS

---

# FUTURE EXPANSION PLANS

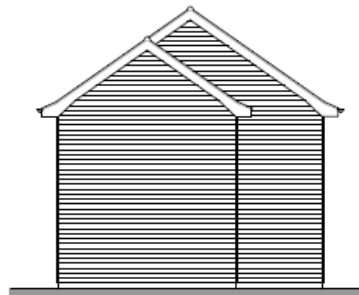
As part of our continued success and annual growth rate, we have plans signed off for an **additional 3,500m<sup>2</sup>** at our headquarters.

We are continuing to work with key clients to understand upcoming forecasts to ensure that floorspace is not a bottleneck. This currently due to be completed by 2028.

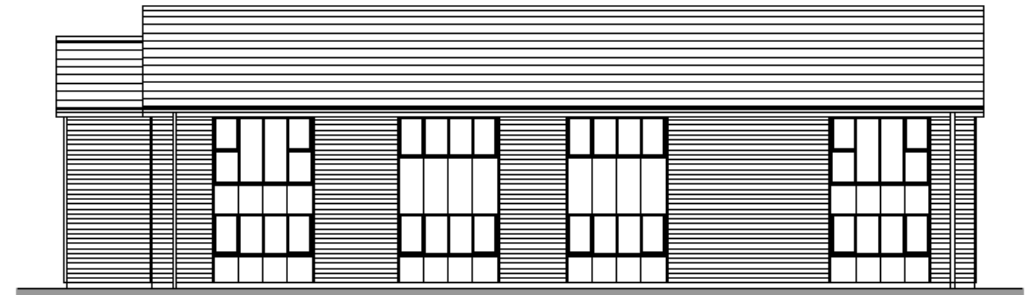


# FUTURE EXPANSION PLANS

As part of our continued drive for a premium customer experience, we have plans currently being reviewed to build a new reception & customer experience area at the front of our headquarters premises. This is currently planned to be completed by 2026.



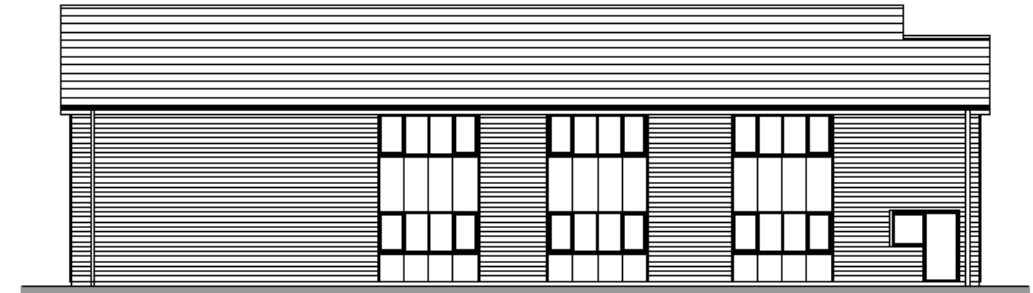
Proposed Side Elevation  
Scale: 1/100



Proposed Front Elevation  
Scale: 1/100



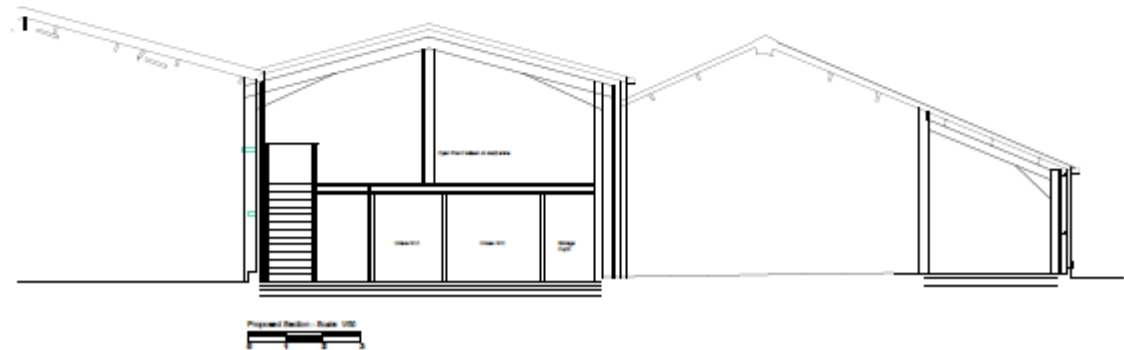
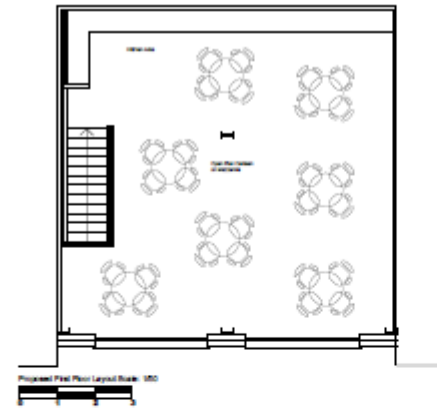
Proposed Side Elevation  
Scale: 1/100



Proposed Rear Elevation  
Scale: 1/100

# FUTURE EXPANSION PLANS

As part of the growth in sales and headcount, we are currently in the final stages of planning for a new amenities centre within our BCEC facility. This will include larger break-out areas for employees, allowing us to push forward with our successful recruitment and training initiatives and drive towards our projected double digit growth YoY.



# EUROPEAN CENTRE OF EXCELLENCE

As part of our continued success within the Irish market, we have plans to expand our current facility or relocate to a dedicated site adding around **50% production capacity** by 2026.



# USA SUPPORT HUB

Whilst PCE has the resources to support our clients in the Americas region, we are witnessing growing demand of our solutions yearly.

This has resulted in a strategy to have full manufacturing capabilities in the **US market** by **2029**.



USA SUPPORT HUB

**THANK YOU!**