



Welcome
to the
Suffolk Chamber Forum in Ipswich

Kindly hosted by



**GREAT
COMPANY
TO BE IN**



AGENDA

- Welcome by Forum Chair – Mike Bowden, Cory Brothers
- Introduction to our hosts – Douglas Rintoul, New Wolsey Theatre
- Working Together for Ipswich – David Ralph, Ipswich Vision Board
- Brightening The Corners – Joe Bailey, Brighten The Corners
- Eastern Angles & Ipswich – Jake Smith, Eastern Angles
- DanceEast – Bryony Hope, DanceEast
- Regent Theatre – Richie Ross, Ipswich Borough Council
- Suffolk Chamber of Commerce policy update & dates for diaries – Toby Warren, Suffolk Chamber of Commerce
- Chair's closing remarks and date & venue of next forum meeting
- Close and optional tour of The new Wolsey Theatre



**GREAT
COMPANY
TO BE IN**





Suffolk Chamber of Commerce

Ipswich Place Forum

2 October 2024

Douglas Rintoul –

Chief Executive & Artistic Director, New Wolsey Theatre

Introduction to our hosts



Welcome
to the
Suffolk Chamber Forum in Ipswich

Kindly hosted by



**GREAT
COMPANY
TO BE IN**





Suffolk Chamber of Commerce

Ipswich Place Forum

2 October 2024

David Ralph –

Chair, Ipswich Vision Board

Working Together for Ipswich



**TOWN
S FUND**

**TOWNS
DEAL**

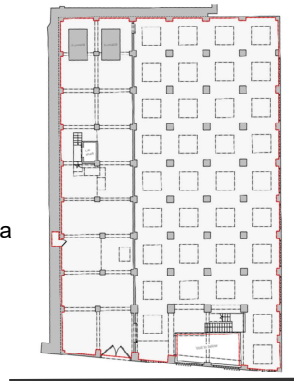
TOWNS FUND: PAULS SILO

The former R & W Paul silo on St Peters Dock, a 55-meter-high derelict concrete structure.

The Towns Fund project aims to transform the silo into a landmark featuring an external climbing wall, public areas, and activity spaces.

However, due to the silo's complex interior and structural constraints, finding feasible uses remains challenging. Recent feasibility studies and marketing efforts have resulted in viable options for commercial redevelopment coming forward.

The options for Pauls Silo remain open and the Borough Council as owner will need to consider the various options shortly.



IPSWICH.GOV.UK

**TOWNS
DEAL**

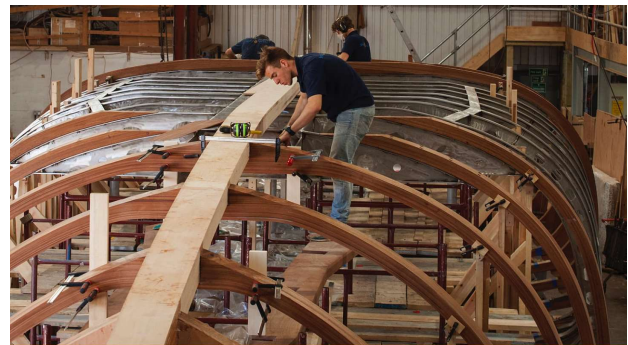
TOWNS FUND: ACADEMY OF YACHT BUILDING

Restoration of dilapidated building to provide a venue for an Academy of Yacht Building.

Providing world class training in the craft of boat building for 90 students a year

Despite working closely together and exploring several options, the project board had not been able to bridge the capital funding gap or identify a sustainable and financially viable academic model.

It has been recommended that the Yacht Academy project is closed and that the unused budget of £1,082,629 is reallocated to other projects.



IPSWICH.GOV.UK

**TOWNS
DEAL**

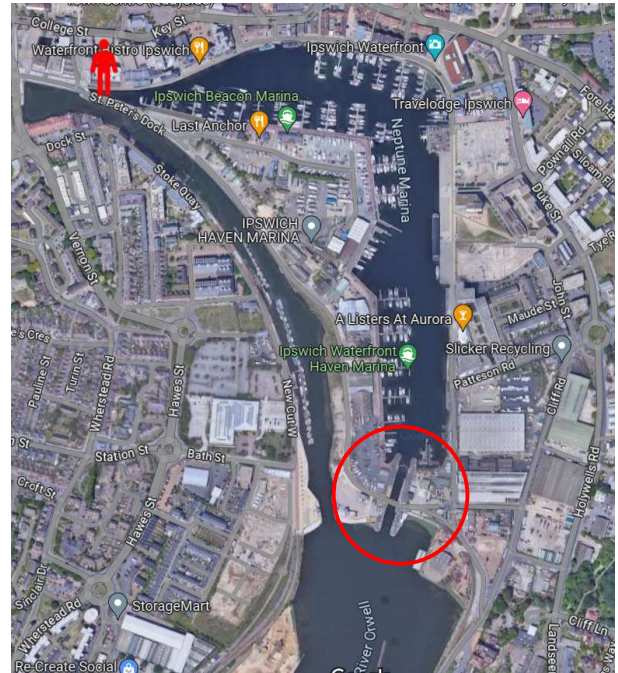
TOWNS FUND: PEDESTRIAN BRIDGE

The 'Island Site' is a 6ha site identified in the Local Plan for 400 houses, mixed commercial and leisure uses.

This project will provide a pedestrian and cyclist access across the River Orwell to the 6ha 'Island Site' enabling people to move from bank to bank by foot or bike without having to go to Stoke Bridge (approximately ½ mile upriver). It will also provide a circular walking route around Ipswich Waterfront.

The proposed location of the bridge has been identified and the landowners, Associated British Ports (ABP) are agreeing terms of reference with a view to begin looking at using the existing bridge for public access.

As well as providing public access to the 'Island Site' at its southernmost point, it is intended that this investment will help unlock the site for redevelopment.



IPSWICH.GOV.UK

**TOWNS
DEAL**

TOWNS FUND: LOCAL SHOPPING PARADES

These local facilities are vital community assets for those living and working in those areas of the town.

This is a £2.8m project where we are consulting with the businesses at each parade about what will make a difference at their parade

- Provision of bins, benches, bike racks, planters, defibs, CCTV, streetlighting, resurfacing and relining.
- Level access provision for shops
- Shopfront Improvement Grants
- Community Facilities Grants

Investment in these public amenities is ensuring the Towns Fund reaches out across local communities in Ipswich for the benefit of residents who use their local parade and community facilities



IPSWICH.GOV.UK

**TOWNS
DEAL**

TOWNS FUND: DIGITAL IPSWICH**>> Digby & Beattie****>> Journey of Words****>> Specially Spooky****>> Time Travel 1860s**

 IPSWICH.GOV.UK

**TOWNS
>> DEAL**
TOWNS FUND: REGENERATION FUND

£8m grant fund to bring empty spaces in Ipswich town centre back into use.

The fund will contribute to creating a vibrant and attractive town centre with a mix of uses that reduce the current overreliance on retail – uses will include cultural, education, health, leisure & hospitality, retail and residential.

Regeneration fund projects will:

- Activate vacant properties
- Drive interest in Ipswich
- Bring a new mix of uses to the town centre
- Leverage private sector investment into Ipswich
- Increase footfall and dwell time
- Increase land-values



 IPSWICH.GOV.UK

**TOWNS
>> DEAL**



140 Suffolk
Chamber of
Commerce

Welcome
to the
Suffolk Chamber Forum in Ipswich

Kindly hosted by



**GREAT
COMPANY
TO BE IN**



Suffolk Chamber of Commerce

Ipswich Place Forum

2 October 2024

Joe Bailey –

Chief Executive, Brighten The Corners

Brightening The Corners



Brightening The Corners

Tune up project - <https://www.youtube.com/watch?v=b6Jpr3YkW7M>

Festival Review - <https://www.youtube.com/watch?v=KVI6VY9t-4c&t=3s>



Welcome
to the
Suffolk Chamber Forum in Ipswich

Kindly hosted by



**GREAT
COMPANY
TO BE IN**





Suffolk Chamber of Commerce

Ipswich Place Forum

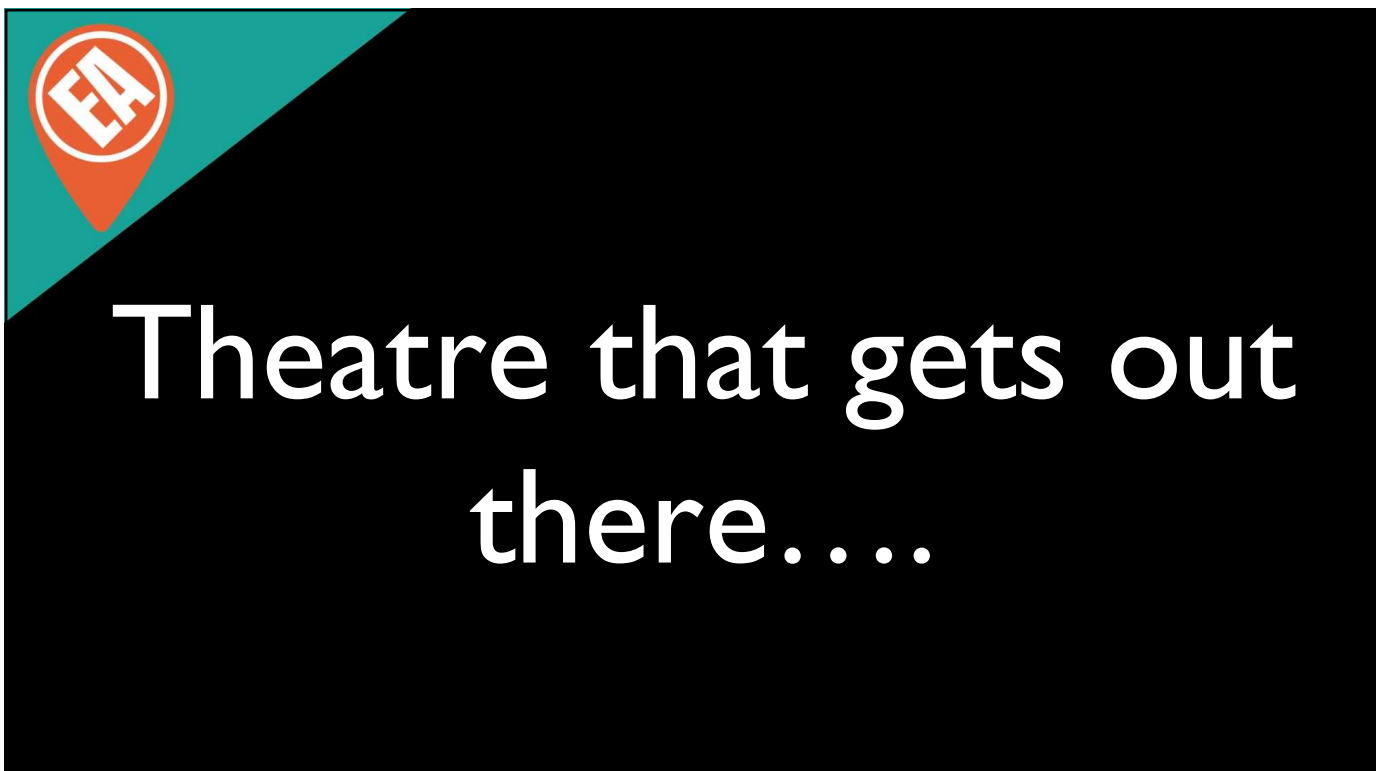
2 October 2024

Jake Smith –

Chief Executive, Eastern Angles

Eastern Angles & Ipswich







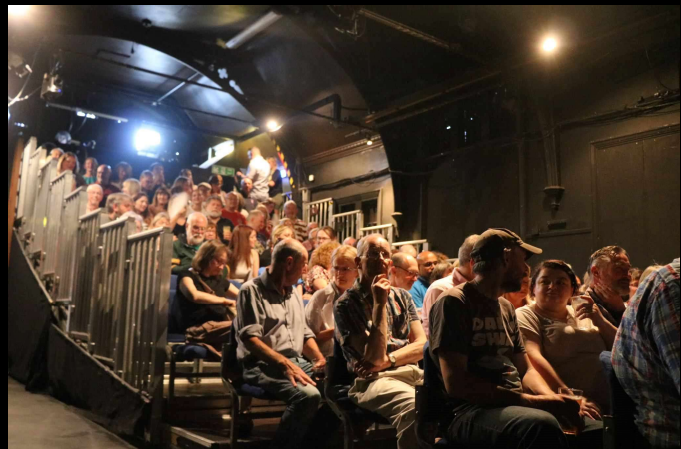
Eastern Angles Arts Centre

- An Arts Centre
- Co-working and Hot desking space
- Meeting rooms
- Rehearsal space
- Community/Gallery space
- Community Garden
- Theatre Venue – Eastern Angles Studio
- Regular users include South Street Kids, Inside Out, Able Health Care, Ipswich Reggae Choir.



Eastern Angles Studio Theatre

- The building was originally a Victorian primary school but has since been converted into a working theatre
- It situated within the Eastern Angles Centre.
- Host EA productions, Touring Productions, Concerts, Standup, Conferences, Parties and Workshops.





Hires

- Theatre Hires
- Room Hires
- Dome Hires
- Seating Hires
- Livestreaming Hires



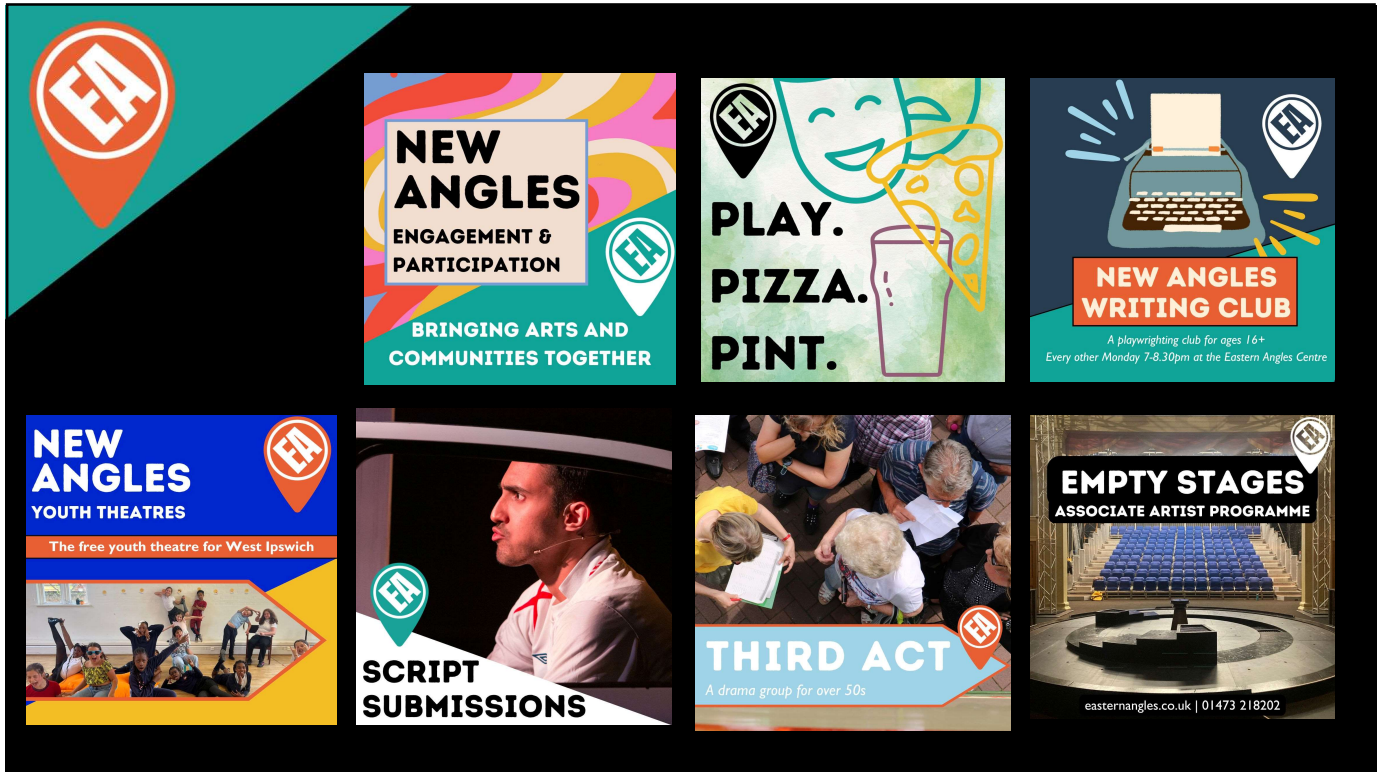
Eastern Angles on Tour



EA tours to an area the size of Wales.

Reaching 5 Counties, 14 Districts and around 50 different venues each year







140 Suffolk Chamber of Commerce

Welcome to the Suffolk Chamber Forum in Ipswich

Kindly hosted by



GREAT COMPANY TO BE IN








Suffolk Chamber of Commerce

Ipswich Place Forum

2 October 2024

Bryony Hope –
Head of Communications & Development, DanceEast
About DanceEast



DanceEast

[DanceEast Overview 2023 \(youtube.com\)](https://www.youtube.com/watch?v=...)



Welcome
to the
Suffolk Chamber Forum in Ipswich

Kindly hosted by



**GREAT
COMPANY
TO BE IN**





Suffolk Chamber of Commerce

Ipswich Place Forum

2 October 2024

Richie Ross –

General Manager, Regent Theatre & Corn Exchange, Ipswich Borough Council

Regent Theatre



The next
100
years





- Opened on the 4th November 1929
- Took 12 months to build
- Seating for 2000 people
- Renamed the Gaumont in 1955
- Rebranded as the Odeon in 1987
- Acquired by IBC in 1991 and rebranded as The Regent

Over the years the stage has hosted many legends...

- Cliff Richard
- Buddy Holly
- Little Richard
- Whitesnake
- Stereophonics
- ACDC
- Tom Jones
- Chris Rea
- Tina Turner

ON THE STAGE **GAUMONT - IPSWICH** **ONE DAY ONLY**
 Manager: P. Lowe Telephone: 53641
Wednesday 22nd May at 6.35 and 8.45

Peter Walsh and Kennedy Street Enterprises Ltd., in association with Tiff Burris presents

THE BEATLES "PLEASE PLEASE ME" "FROM ME TO YOU"

GERRY AND THE PACEMAKERS

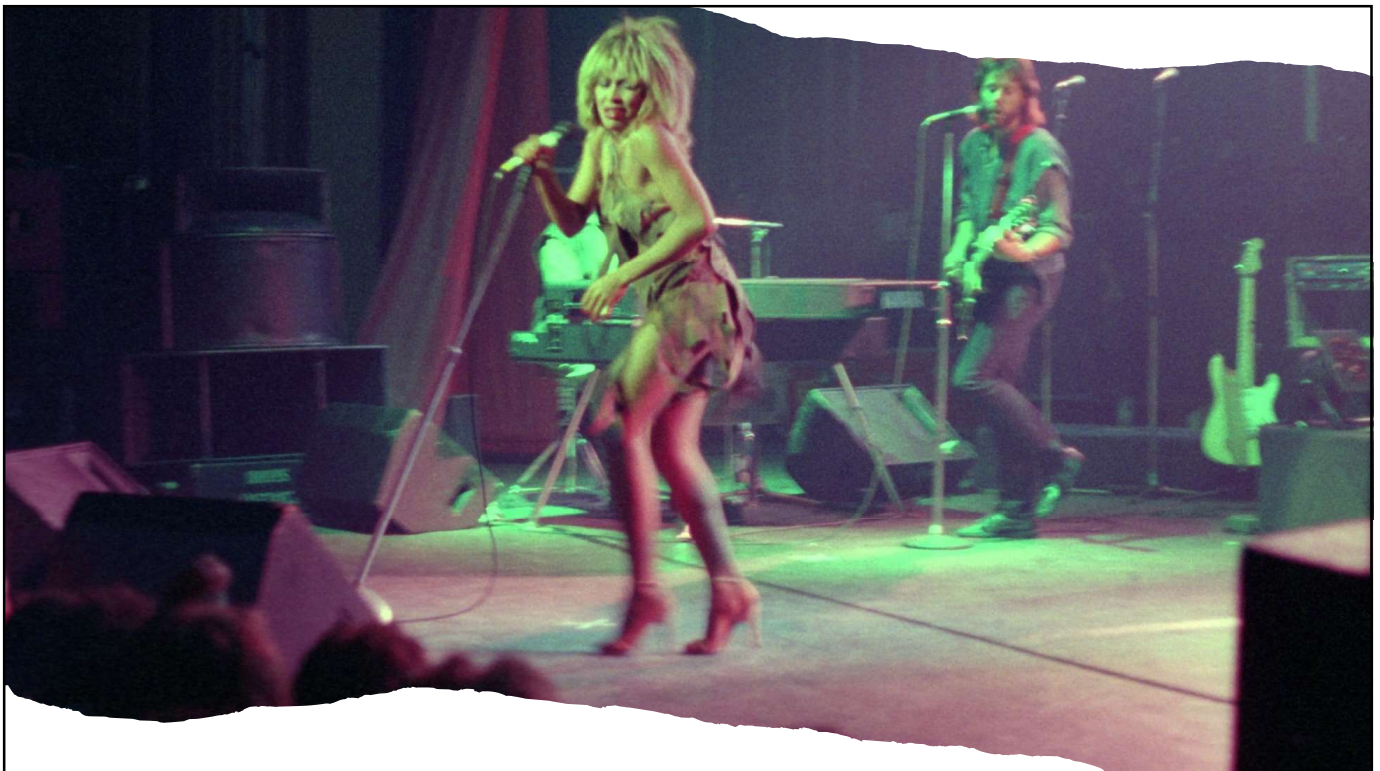
DAVID MACBETH HIT RECORDER OF "A VERY GOOD YEAR FOR GIRLS"

LOUISE CORDET THE LOVELY FILM AND RECORDING STAR THE "I'M JUST A BABY" GIRL

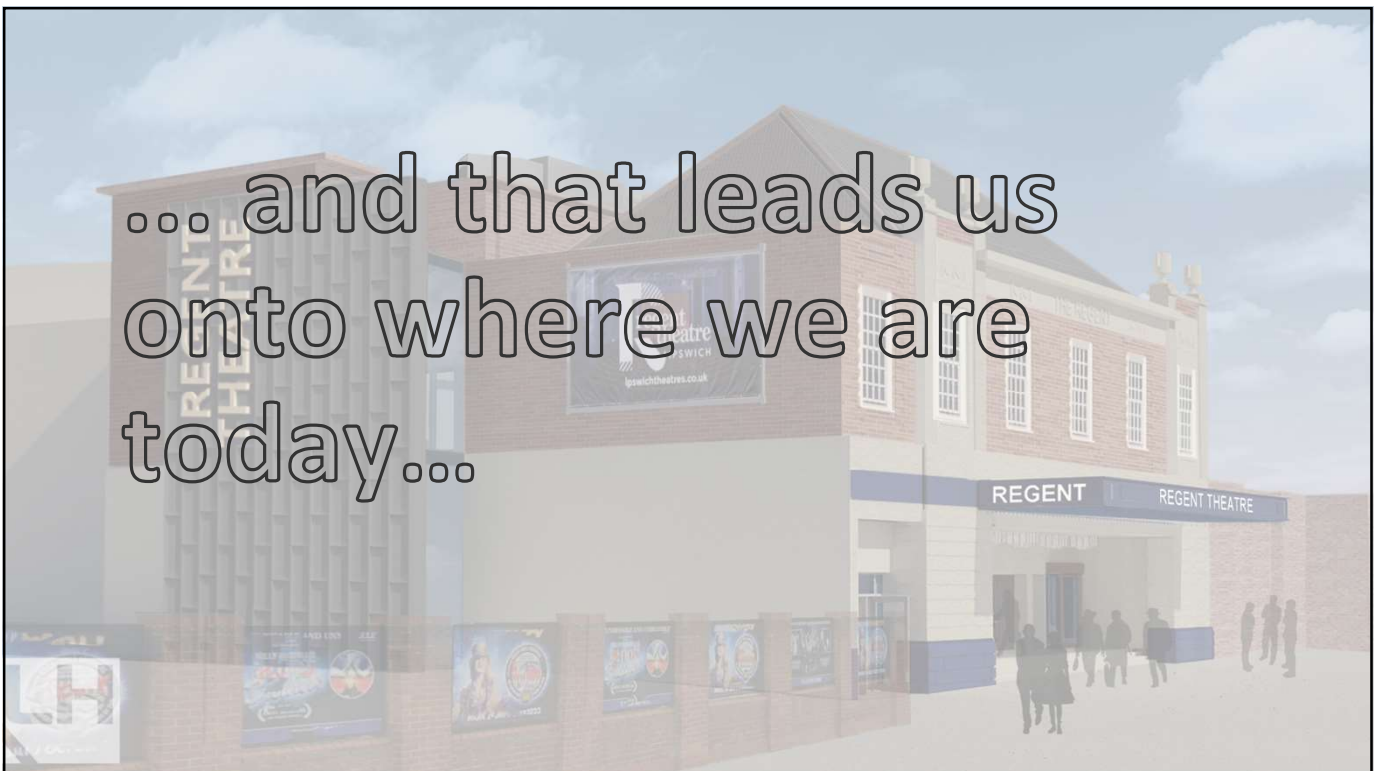
TONY MARSH **TERRY YOUNG SIX** **ERKEY GRANT** **IAN CRAWFORD**

ROY ORBISON FROM THE U.S.A. "ONLY THE LONELY" "DREAM BABY" "RUNNING SCARED" "IN DREAMS"

Seats: 10/6 9/6 8/6 7/6 6/6 5/6









2025 will see the completion of the second stage of the refurbishment programme.

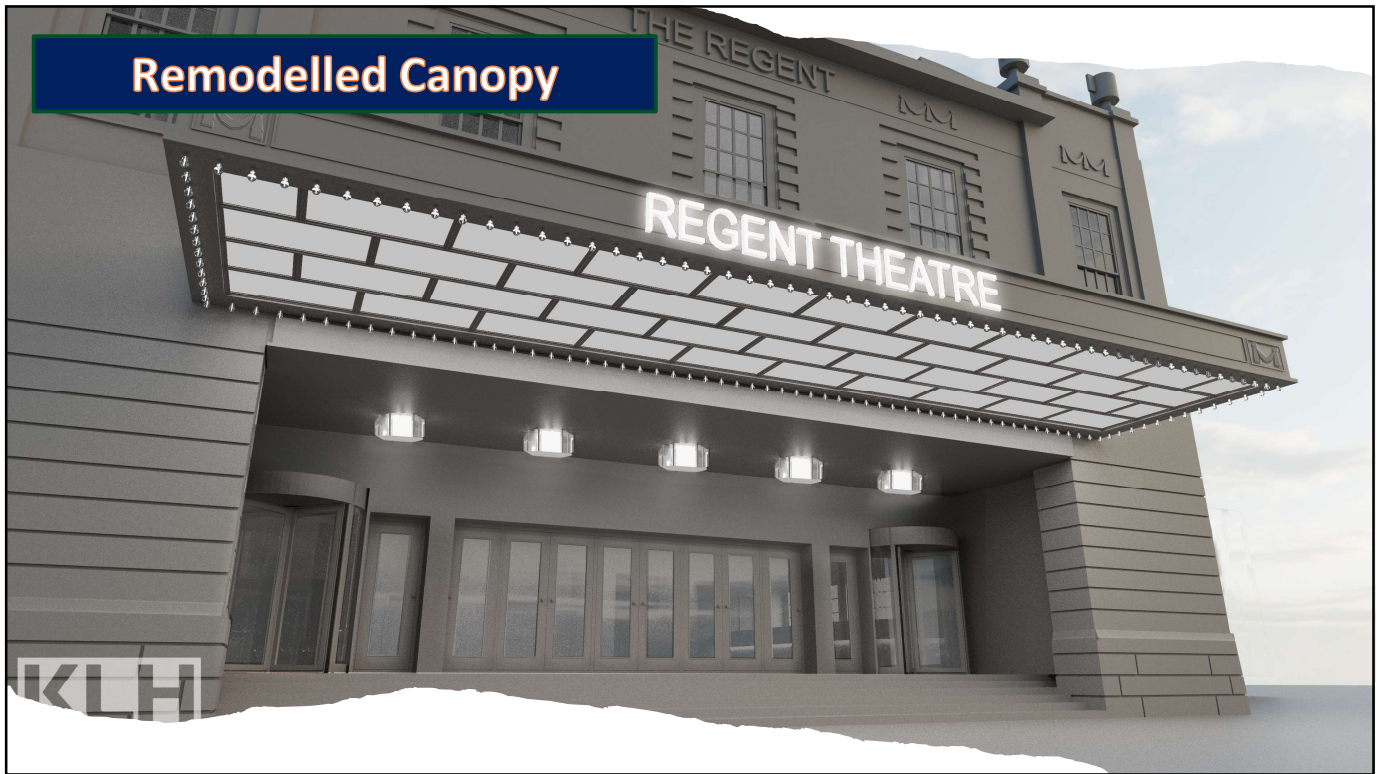
This see the theatre closed for 9 months From May to December.

The project cost is £3.45m





Remodelled Canopy



Foyer

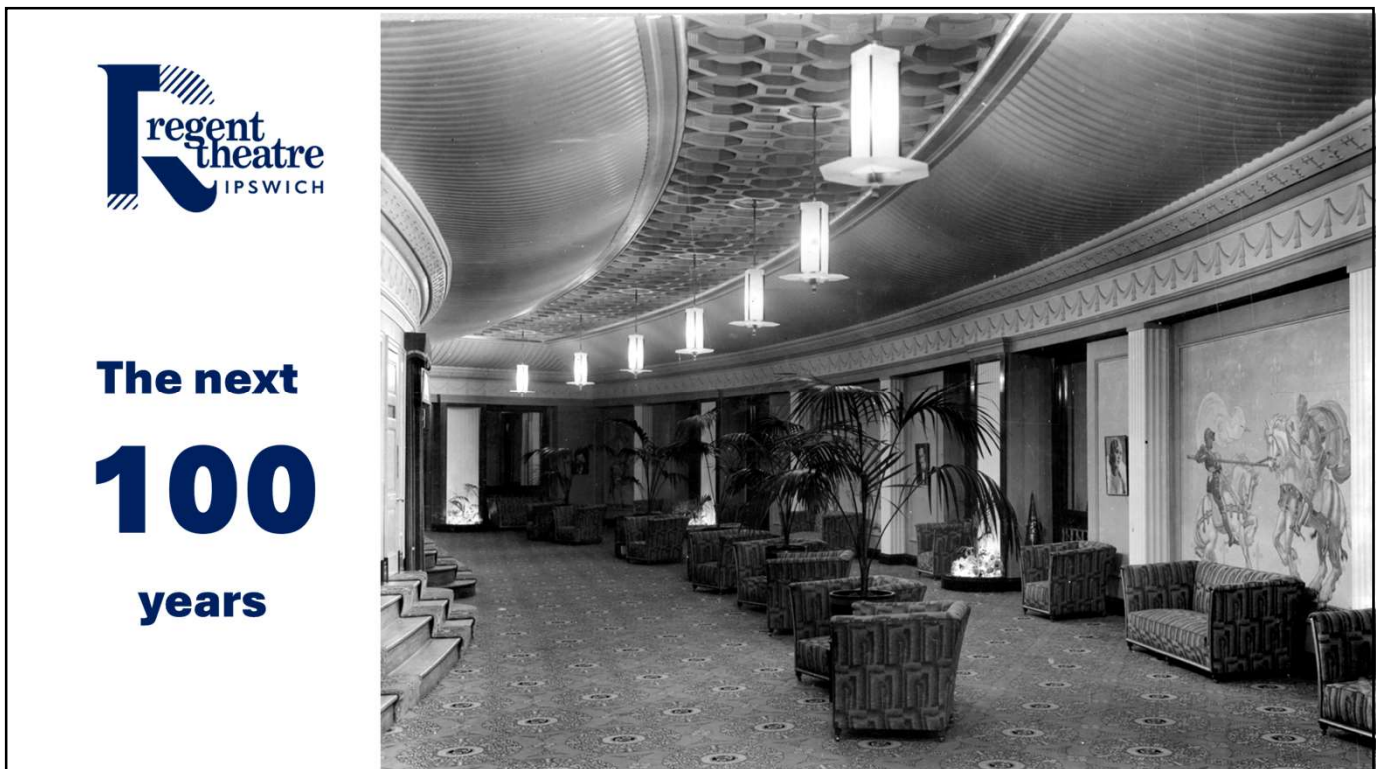


Crush Hall



Circle Lounge







140 Suffolk Chamber of Commerce

Welcome to the Suffolk Chamber Forum in Ipswich

Kindly hosted by



GREAT COMPANY TO BE IN








Suffolk Chamber of Commerce

Ipswich Place Forum

2 October 2024

Toby Warren –

Head of Policy, Suffolk Chamber of Commerce

Suffolk Chamber policy update & dates for diaries

Date & Venue of next forum meeting



140 Suffolk
Chamber of
Commerce

Welcome
to the
Suffolk Chamber Forum in Ipswich

Kindly hosted by



**GREAT
COMPANY
TO BE IN**



Suffolk Chamber of Commerce
Ipswich Place Forum
2 October 2024

Close

Optional tour of The new Wolsey Theatre